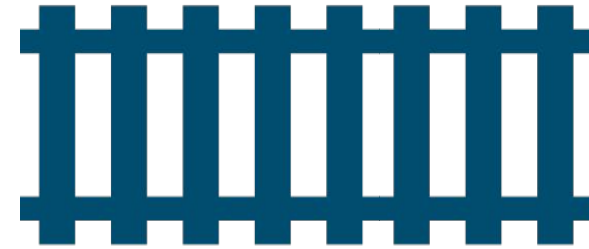




*Farnborough
North and Hatches
Level Crossing
Project Overview*



Safety Moment



ITV REPORT 22 March 2018 at 5:52pm

Woman who lost leg at deadly level crossing renews plea to close it

A woman badly injured when she was hit by a train at a level crossing in Hampshire more than twenty years ago is renewing her plea for it to be replaced by a footbridge.

Lucy Ruck was on her way to college when she crossed over the tracks at Farnborough North station. She's spoken exclusively to our Transport Correspondent, Mike Pearse:

My leg was half a mile up the track...victim tells of horror in new alert over level cross

A WOMAN who lost a leg when she was hit by a train as a teenager is now fronting a campaign warning of the perils of level crossings. Lucy Ruck, 43, was just 17 when she was struck by a high-speed train.

By JOHN INGHAM

PUBLISHED: 13:32, Wed, May 16, 2018 | UPDATED: 13:57, Wed, May 16, 2018

SHARE  TWEET     



Lucy Ruck, 43, was just 17 when she was struck by a high-speed train

She was hit so hard her leg was found half a mile up the track.

The mum of two agreed to spearhead the Network Rail campaign after a survey found that only one in three 18 to 24-year-olds thinks going on a railway track is dangerous.

I wasn't reckless or in a rush but I went with the flow of the people traffic

Lucy Ruck

Objectives of the scheme

Network Rail has a strict statutory duty to run a *safe* railway network and eliminate risks from it.

Level crossings are one of the key sources of catastrophic risk, we have a funded strategy to reduce it.

Farnborough North and Hatches are high risk footpath level crossings [located in the surrey heath and Hampshire districts. Both routes serve as public rights of way routes] within our strategy.

Both crossings have significant and irremovable safety issues e.g. restricted sighting of trains at Hatches currently mitigated by trains sounding their horns.



A vertical decorative graphic on the left side of the page, consisting of a series of blue and white rectangular segments arranged to resemble a railway track.

Key Driver

The key driver for introducing change at these locations is:



Safety

Each Level Crossing on the route is associated with a risk score. Closing both of the level crossings are anticipated to remove the safety risk around Farnborough.

Introduction to Farnborough North

To facilitate UWC closure, existing bridge ("The Hatches") requires replacement. – existing GRIP 2 report by Hampshire CC

**Farnborough North Pedestrian & UWC Crossing - Closure of pedestrian crossing with AFA style station FB
ELR:GTW2
53m 11ch**

To facilitate UWC closure, existing access road requires upgrading – existing GRIP 2 report by Hampshire CC

**Hatches Pedestrian Crossing – Closure of crossing with Stepped or Ramped FB at existing location or Spencer's Close
ELR: AAV
38m 35ch**

Farnborough North LX

- Farnborough North LX is located to South of Farnborough North station.
- The Level Crossing is pedestrian & user worked with a site keeper in place.
- Existing pedestrian crossing has a MSL warning system in place with wicket gates.
- Crossings links residential areas of Frimley Green & Farnborough North.



Farnborough, England
Google
Street View



Hatches level crossing

- Hatches is a public footpath crossing located in Frimley Green, Surrey. It lies between Frimley & Ash Vale Stations on the AAV line.
- The crossing is surrounded by a residential estate to the East and private fishing lakes to the West linking to Farnborough North LX.
- Protection method at both crossings is signage and whistle boards only.
- The crossing is surrounded by a residential estate to the east and private fishing lakes and wooded areas to the west. The crossing is well used by dog walkers, cyclists, commuters and visitors to the fishing lakes.



Public right of way

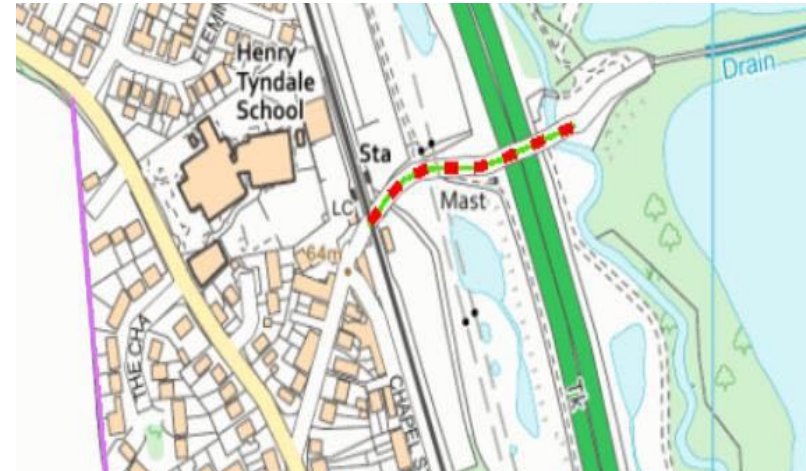
Farnborough North

Farnborough North level crossing carries a Public Right of Way, bridleway 24. This scheme includes the diversion of the PRow from the crossing to over the bridge that is to be constructed.

Bridleway 24 is subject to a Temporary Traffic Regulation Order (TTRO) which limits the use to footpath status only. The crossing sees very little equestrian use and it is expected to remain the case.

Network Rail are in conversation with Hampshire County Council (HCC) for the permanent downgrade of bridleway 24 to footpath status.

The new bridge at Farnborough North will include cycle gutters making it accessible for cyclists. A further Cycle Track Order will be made for the length of the PRow so cyclist use is not restricted.



Public right of way

The Hatches

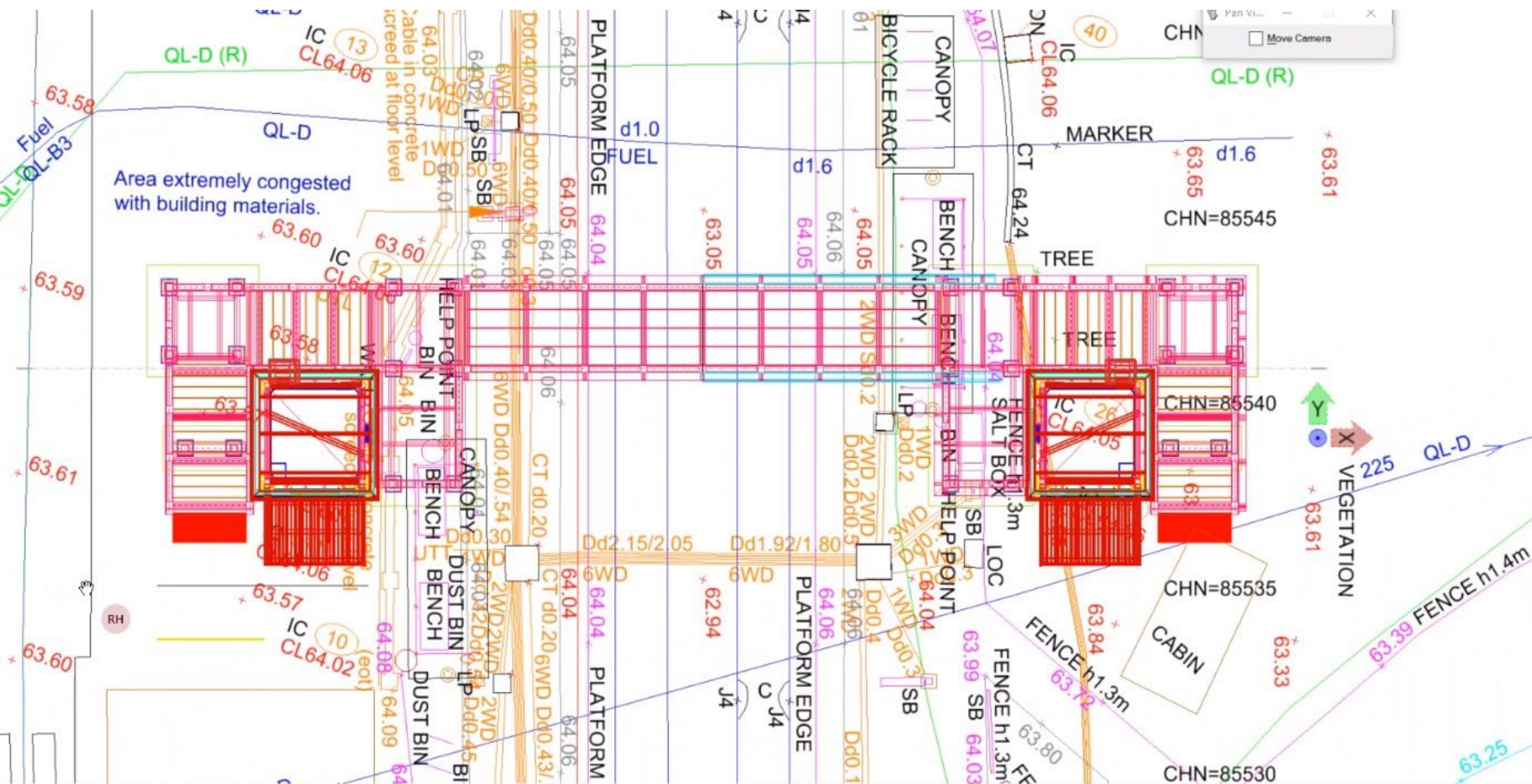
The Hatches carries PRow bridleway 19. This will be diverted from the crossing to the bridge at Spencers Close.

A ramped bridge will be installed for easy access for cyclist and wheel chair users.

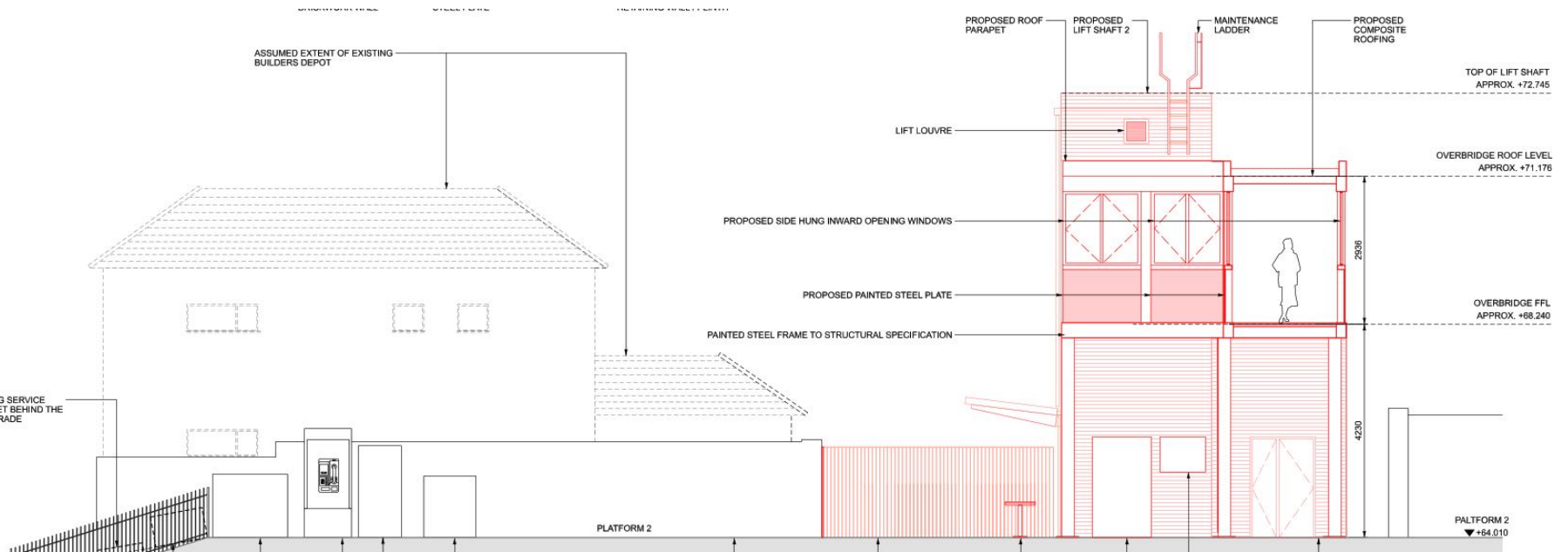
The extent of bridleway 19 is also subject to a TTRO and will also be permanently downgraded to footpath status. Network Rail are in conversation with Surrey County Council and intend for a Cycle Track Order to be made allowing cyclists to use the footpath.



Farnborough Selected Option



Farnborough Selected Option



The height from the top of the lift shaft to the platform is 8.73m.

The height from the top of footbridge roof to the platform is 7.16m.

Farnborough North Level Crossing



Farnborough North Level Crossing

